



**BSI Standards Publication**

**External fire exposure of roofs and roof coverings — Extended application of test results from CEN/TS 1187**

---

## National foreword

This Published Document is the UK implementation of CEN/TS 16459:2019. It supersedes PD CEN/TS 16459:2013, which is withdrawn.

The UK participation in its preparation was entrusted to Technical Committee FSH/22/-/8, Fire resistance tests for external fire exposure for roofs.

A list of organizations represented on this committee can be obtained on request to its secretary.

This publication does not purport to include all the necessary provisions of a contract. Users are responsible for its correct application.

© The British Standards Institution 2019  
Published by BSI Standards Limited 2019

ISBN 978 0 539 00137 2

ICS 13.220.50; 91.060.20

**Compliance with a British Standard cannot confer immunity from legal obligations.**

This Published Document was published under the authority of the Standards Policy and Strategy Committee on 30 November 2019.

### Amendments/corrigenda issued since publication

Date	Text affected
------	---------------

---

TECHNICAL SPECIFICATION  
SPÉCIFICATION TECHNIQUE  
TECHNISCHE SPEZIFIKATION

**CEN/TS 16459**

November 2019

ICS 13.220.50; 91.060.20

Supersedes CEN/TS 16459:2013

English Version

**External fire exposure of roofs and roof coverings -  
Extended application of test results from CEN/TS 1187**

Exposition des toitures et des couvertures à un feu  
extérieur - Application étendue des résultats d'essai de  
la CEN/TS 1187

Beanspruchung von Bedachungen durch Feuer von  
außen - Erweiterter Anwendungsbereich der  
Prüfergebnisse aus CEN/TS 1187

This Technical Specification (CEN/TS) was approved by CEN on 16 September 2019 for provisional application.

The period of validity of this CEN/TS is limited initially to three years. After two years the members of CEN will be requested to submit their comments, particularly on the question whether the CEN/TS can be converted into a European Standard.

CEN members are required to announce the existence of this CEN/TS in the same way as for an EN and to make the CEN/TS available promptly at national level in an appropriate form. It is permissible to keep conflicting national standards in force (in parallel to the CEN/TS) until the final decision about the possible conversion of the CEN/TS into an EN is reached.

CEN members are the national standards bodies of Austria, Belgium, Bulgaria, Croatia, Cyprus, Czech Republic, Denmark, Estonia, Finland, France, Germany, Greece, Hungary, Iceland, Ireland, Italy, Latvia, Lithuania, Luxembourg, Malta, Netherlands, Norway, Poland, Portugal, Republic of North Macedonia, Romania, Serbia, Slovakia, Slovenia, Spain, Sweden, Switzerland, Turkey and United Kingdom.



EUROPEAN COMMITTEE FOR STANDARDIZATION  
COMITÉ EUROPÉEN DE NORMALISATION  
EUROPÄISCHES KOMITEE FÜR NORMUNG

**CEN-CENELEC Management Centre: Rue de la Science 23, B-1040 Brussels**

## Contents

Page

European foreword.....	3
Introduction .....	4
1 Scope .....	6
2 Normative references .....	6
3 Terms and definitions .....	8
4 Product and end-use application parameters for roof coverings/roof systems.....	10
5 Extended application .....	11
6 Influence of product parameters and end-use application parameters on external exposure to fire test performance .....	13
7 General guidance to the annexes for application rules.....	17
Annex A (normative) Application rules for test results from CEN/TS 1187, test 1, per product group and/or components.....	19
Annex B (normative) Application rules for test results from CEN/TS 1187, test 2, per product group.....	46
Annex C (normative) Application rules for test results from CEN/TS 1187, test 3, per product group.....	57
Annex D (normative) Application rules for test results from CEN/TS 1187, test 4 for individual product groups .....	78
Annex E (normative) Data acceptance principles for the submission of change request to EXAP rules in Annex A to Annex D .....	96
Bibliography.....	103

## European foreword

This document (CEN/TS 16459:2019) has been prepared by Technical Committee CEN/TC 127 “Fire safety in buildings”, the secretariat of which is held by BSI.

Attention is drawn to the possibility that some of the elements of this document may be the subject of patent rights. CEN shall not be held responsible for identifying any or all such patent rights.

This document supersedes CEN/TS 16459:2013.

CEN/TS 16459:2019 includes the following significant technical changes with respect to CEN/TS 16459:2013:

- the Normative references have been updated;
- a new definition was added in 3.1 (term „layer“);
- the requirements to involve notified bodies in the preparation of EXAP rules was deleted from 5.4 and general;
- under clause 7, Table 5 was updated according to the insertion of new EXAP rules in different Annexes and sections thereof, i.e. (see next lines);
- 3.5 Roof lights and roof windows: set of specific rules was moved to Annex A;
- 3.11 Liquid applied roof waterproofing kits: set of specific rules was moved to Annex A;
- the rules for the parameter „Application on existing roofs (“renovation”)“ have been reconsidered for all Annexes and were amended and/or specified in more detail;
- Annex E „Data acceptance principles for the submission of change request to EXAP rules in Annex A to Annex D“ is completely new: This annex sets out to establish the principles upon which data presented to CEN TC127/WG 5 (External fire exposure of roofs and roof coverings) will be reviewed by the committee or its nominated *ad hoc* Sub Group for consideration.

This document has been prepared under a standardization request given to CEN by the European Commission and the European Free Trade Association.

According to the CEN/CENELEC Internal Regulations, the national standards organisations of the following countries are bound to announce this Technical Specification: Austria, Belgium, Bulgaria, Croatia, Cyprus, Czech Republic, Denmark, Estonia, Finland, France, Germany, Greece, Hungary, Iceland, Ireland, Italy, Latvia, Lithuania, Luxembourg, Malta, Netherlands, Norway, Poland, Portugal, Republic of North Macedonia, Romania, Serbia, Slovakia, Slovenia, Spain, Sweden, Switzerland, Turkey and the United Kingdom.

## **Introduction**

Fire tests on individual roofs/roof coverings are carried out in accordance with CEN/TS 1187. The results from these tests can then be classified in accordance with EN 13501-5.

In order to derive classifications for similar roofs/roof coverings based on the data determined from CEN/TS 1187, additional rules are needed.

These rules are direct application rules or extended application rules. Rules within the direct field of application of test results are given in EN 13501-5 (these rules correspond to CEN/TS 1187).

This document outlines a procedure to develop rules for extended application and lists application rules which have already been developed in Annex A to Annex D for test methods 1 to 4 from CEN/TS 1187, where Annex A is related to test method 1, Annex B relates to test method 2, and so forth.

Annex A to Annex D have been developed based upon the available information and the roof systems in the market. The objective of this document is to provide a methodology for optimizing the number of tests required to cover the maximum field of application.

Annex E describes a procedure in which data acceptance principles for the submission of change request to EXAP rules in Annex A to Annex D are set.

Whilst special attention has been focused on roofs typically comprising a support deck/substrate, vapour barrier, insulation layer(s), membranes/roof coverings, there will be occasions when other separating layers or intermediate layers will be needed to satisfy other roof characteristics. These layers should be included in the consideration of the roof/the roof covering being classified.

**NOTE** Tests 1, 3 and 4 are carried out on a roof construction, whereas test 2 is done on a roof covering with its substrate below, where the substrate may comprise various layers.

The decision route from the diagram below shows ways to determine which procedure to follow, when classifying a roof/roof covering.

The solid line is compulsory, whereas the dotted line is optional.

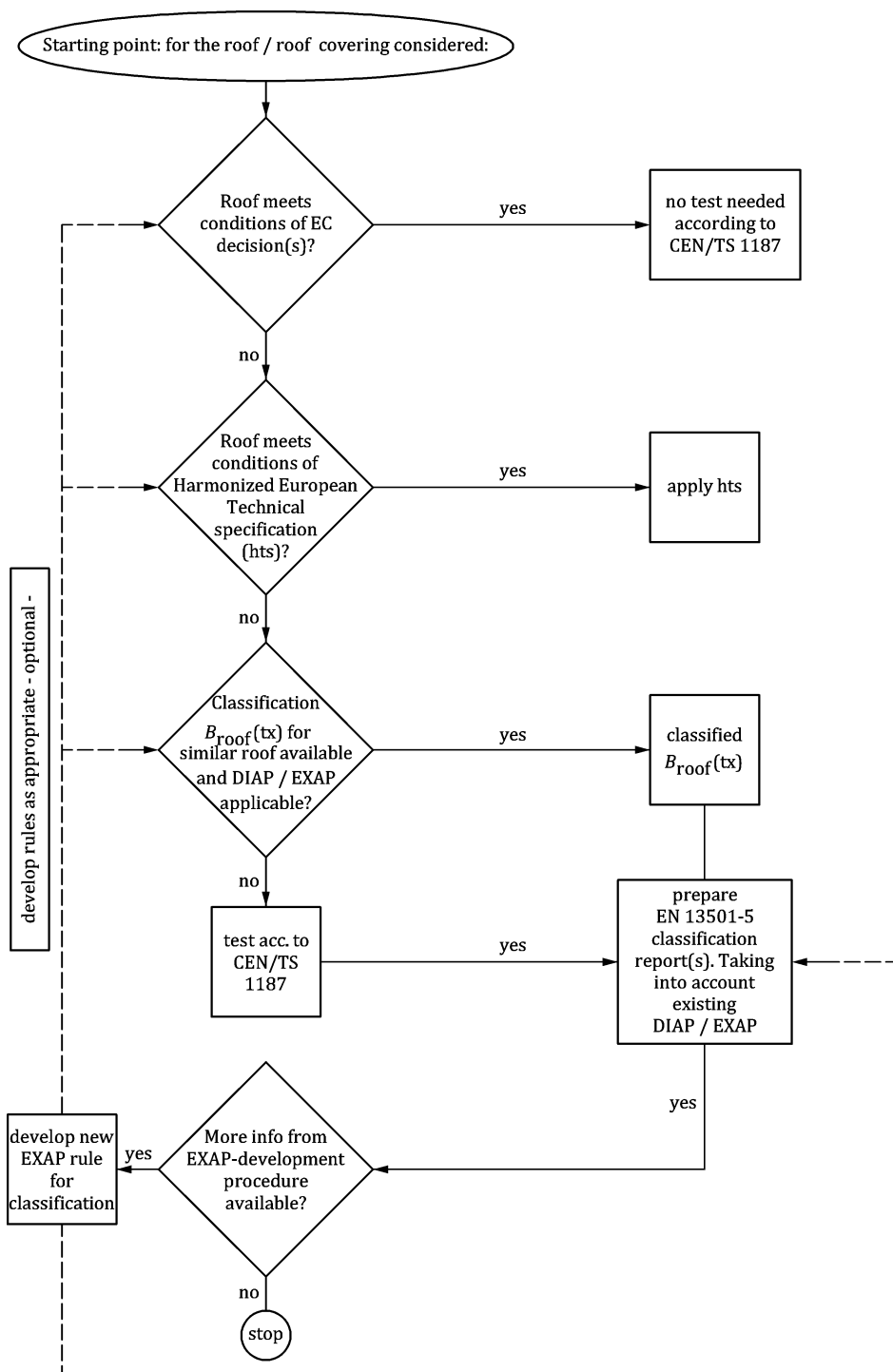


Figure 1 — Decision process on classification of roofs/roof coverings

## 1 Scope

This document gives guidance on the process and development of extended fields of application using test results obtained from CEN/TS 1187, tests 1 to 4, and included in test reports, and other relevant information in order to evaluate and classify the performance of roofs/roof coverings. This document provides a methodology to consider the possible effect(s) on classification to EN 13501-5 from single or multiple changes to the individual product and end-use application parameters of the roof/roof covering.

Specific application guidance is given in Annex A, Annex B, Annex C and Annex D for CEN/TS 1187, tests 1 to 4 respectively.

## 2 Normative references

The following documents are referred to in the text in such a way that some or all of their content constitutes requirements of this document. For dated references, only the edition cited applies. For undated references, the latest edition of the referenced document (including any amendments) applies.

CEN/TS 1187:2012, *Test methods for external fire exposure to roofs*

EN 490, *Concrete roofing tiles and fittings for roof covering and wall cladding — Product specifications*

EN 492, *Fibre-cement slates and fittings — Product specification and test methods*

EN 494, *Fibre-cement profiled sheets and fittings — Product specification and test methods*

EN 506, *Roofing products of metal sheet— Specification for self-supporting products of copper or zinc sheet*

EN 508 (all parts), *Roofing products from metal sheet— Specification for self-supporting products of steel, aluminium or stainless steel sheet*

EN 534, *Corrugated bitumen sheets — Product specification and test methods*

EN 544, *Bitumen shingles with mineral and/or synthetic reinforcements — Product specification and test methods*

EN 1013, *Light transmitting single skin profiled plastics sheets for internal and external roofs, walls and ceilings – Requirements and test methods*

EN 1304, *Clay roofing tiles and fittings — Product definitions and specifications*

EN 1849-2, *Flexible sheets for waterproofing — Determination of thickness and mass per unit area - Part 2: Plastic and rubber sheets*

EN 12326-1, *Slate and stone for discontinuous roofing and external cladding — art 1: Specifications for slate and carbonate slate*

EN 13162, *Thermal insulation products for buildings — Factory made mineral wool (MW) products — Specification*

EN 13163, *Thermal insulation products for buildings — Factory made expanded polystyrene (EPS) products — Specification*