



BSI Standards Publication

## **Child care articles - Compiled interpretations of CEN/TC 252 standards**

---

## National foreword

This Published Document is the UK implementation of CEN/TR 16411:2019. It supersedes PD CEN/TR 16411 DECEMBER:2014, which is withdrawn.

The UK participation in its preparation was entrusted to Technical Committee CW/1, Safety of child use and child care products.

A list of organizations represented on this committee can be obtained on request to its secretary.

This publication does not purport to include all the necessary provisions of a contract. Users are responsible for its correct application.

© The British Standards Institution 2019  
Published by BSI Standards Limited 2019

ISBN 978 0 539 03093 8

ICS 97.190

**Compliance with a British Standard cannot confer immunity from legal obligations.**

This Published Document was published under the authority of the Standards Policy and Strategy Committee on 31 May 2019.

### Amendments/corrigenda issued since publication

Date	Text affected
------	---------------

---

TECHNICAL REPORT

**CEN/TR 16411**

RAPPORT TECHNIQUE

TECHNISCHER BERICHT

May 2019

ICS 97.190

Supersedes CEN/TR 16411:2014

English Version

## Child care articles - Compiled interpretations of CEN/TC 252 standards

Articles de puériculture - Compilation des  
interprétations des normes du CEN/TC 252

Artikel für Säuglinge und Kleinkinder - Gesammelte  
Interpretationen der CEN/TC 252-Normen

This Technical Report was approved by CEN on 8 March 2019. It has been drawn up by the Technical Committee CEN/TC 252.

CEN members are the national standards bodies of Austria, Belgium, Bulgaria, Croatia, Cyprus, Czech Republic, Denmark, Estonia, Finland, Former Yugoslav Republic of Macedonia, France, Germany, Greece, Hungary, Iceland, Ireland, Italy, Latvia, Lithuania, Luxembourg, Malta, Netherlands, Norway, Poland, Portugal, Romania, Serbia, Slovakia, Slovenia, Spain, Sweden, Switzerland, Turkey and United Kingdom.



EUROPEAN COMMITTEE FOR STANDARDIZATION  
COMITÉ EUROPÉEN DE NORMALISATION  
EUROPÄISCHES KOMITEE FÜR NORMUNG

**CEN-CENELEC Management Centre: Rue de la Science 23, B-1040 Brussels**

## Contents

Page

## Contents

European foreword.....	4
Introduction .....	5
1 Scope .....	8
2 00252033 - EN 1273:2005, <i>Child use and care articles — Baby walking frames — Safety requirements and test methods</i> .....	9
3 00252059 - EN 1888:2012, <i>Child care articles — Wheeled child conveyances — Safety requirements and test methods</i> .....	11
4 00252051 - EN 1930:2011, <i>Child use and care articles — Safety barriers — Safety requirements and test methods</i> .....	27
5 00252046 - EN 12586:2007, <i>Child use and care articles - Soother holder - Safety requirements and test methods</i> .....	45
6 00252048 - EN 12790:2009, <i>Child use and care articles — Reclined cradles</i> .....	63
7 00252049 - EN 12221-1:2008, <i>Changing units for domestic use — Part 1: Safety requirements</i> .....	68
8 00252050 - EN 12221-2:2008, <i>Changing units for domestic use — Part 2: Test methods</i> .....	71
9 00252054 - EN 1466:2004+A1:2007, <i>Child care articles — Carry cots and stands — Safety requirements and test methods</i> .....	72
10 00252032 - EN 14350-2:2004, <i>Child use and care articles — Drinking equipment — Part 2: Chemical requirements and tests</i> .....	75
11 00252089 - EN 1400:2013+A1:2014, <i>Child use and care articles - Soothers for babies and young children - Safety requirements and test methods</i> .....	77
12 00252024 - EN 14372:2004, <i>Child use and care articles — Cutlery and feeding utensils — Safety requirements and tests</i> .....	99
13 00252065 - EN 16120:2012, <i>Child use and care articles - Chair mounted seat</i> .....	102
14 00252023 - EN 14350-1:2004, <i>Child use and care articles - Drinking equipment - Part 1: General and mechanical requirements and tests</i> .....	104
15 00252058 - EN 16232:2013, <i>Child use and care articles - Infant swings</i> .....	108
Annex A (informative) Interpretation 3 on 3.9 and 5.1.4.2 in EN 12586:2007, <i>Child use and care articles — Soother holder — Safety requirements and test methods</i> (WI 00252046) .....	111
A.1 Introduction .....	111
A.2 Examples of possible ventilation holes in more recent models of soother holders .....	112

<b>Annex B (informative) Reply to interpretation 3 on 3.9 and 5.1.4.2 in EN 12586:2007, <i>Child use and care articles — Soother holder — Safety requirements and test methods</i> (WI 00252046).....</b>	<b>114</b>
<b>Annex C (informative) Reply to interpretation 1 on 5.1.10 in EN 12586:2007 <i>Child use and care articles — Soother holder — Safety requirements and test methods</i> (WI 00252046) .....</b>	<b>116</b>
<b>C.1 Ventilation holes in fastener (5.1.10) .....</b>	<b>116</b>
<b>C.2 Discussion .....</b>	<b>116</b>
<b>C.3 Final Interpretation .....</b>	<b>121</b>
<b>Bibliography .....</b>	<b>122</b>

## **European foreword**

This document (CEN/TR 16411:2019) has been prepared by Technical Committee CEN/TC 252 “Child care articles”, the secretariat of which is held by AFNOR.

Attention is drawn to the possibility that some of the elements of this document may be the subject of patent rights. CEN shall not be held responsible for identifying any or all such patent rights.

This document supersedes CEN/TR 16411:2014.

## Introduction

This Technical Report contains replies to requests for interpretation and clarifications with regard to the understanding of clauses in the standards elaborated within the CEN/TC 252. The replies concern those requests which have resulted in an interpretation or the decision that no action is necessary.

An interpretation does not have the same status as the text of the standard, nor can it overrule the text of the standard. However, following an interpretation should give assurance that the relevant clause of the standard has been correctly applied. An interpretation will only be regarded as a clarification of the meaning of the standard.

### **a) Disclaimer:**

The interpretations and clarifications have been derived by expert groups of CEN/TC 252. The information contained herein is for guidance only and does not reflect the formal approval by CEN or CEN member bodies. It should be noted that the interpretations are neither part of any standard nor have been referenced in the Official Journal of the European Union.

### **b) Requests for interpretation:**

Requests for interpretations may be submitted by a CEN member body through its national committee or by a CEN/TC 252 liaison (but not directly by an individual or a company) – in accordance with the interpretation protocols agreed by CEN/TC 252. The requests are then channelled to the relevant CEN/TC 252 working group which will deal with the request.

A request for an interpretation may lead to:

#### **1) an interpretation of the standard:**

this should reflect a reasonable interpretation of how the standard should be used, while taking into account:

- i) the wording of the standard;
- ii) the rationale of the standard;
- iii) the history of the standard;

#### **2) a no-action decision:**

this is applicable when it is agreed that the standard appropriately specifies how a child care article should be assessed;

#### **3) a proposal for an amendment of the standard:**

this is applicable when it is agreed that the standard is deficient in some way.

**NOTE** Interpretations are published in CEN/TR 16411, which will be updated on a regular basis.

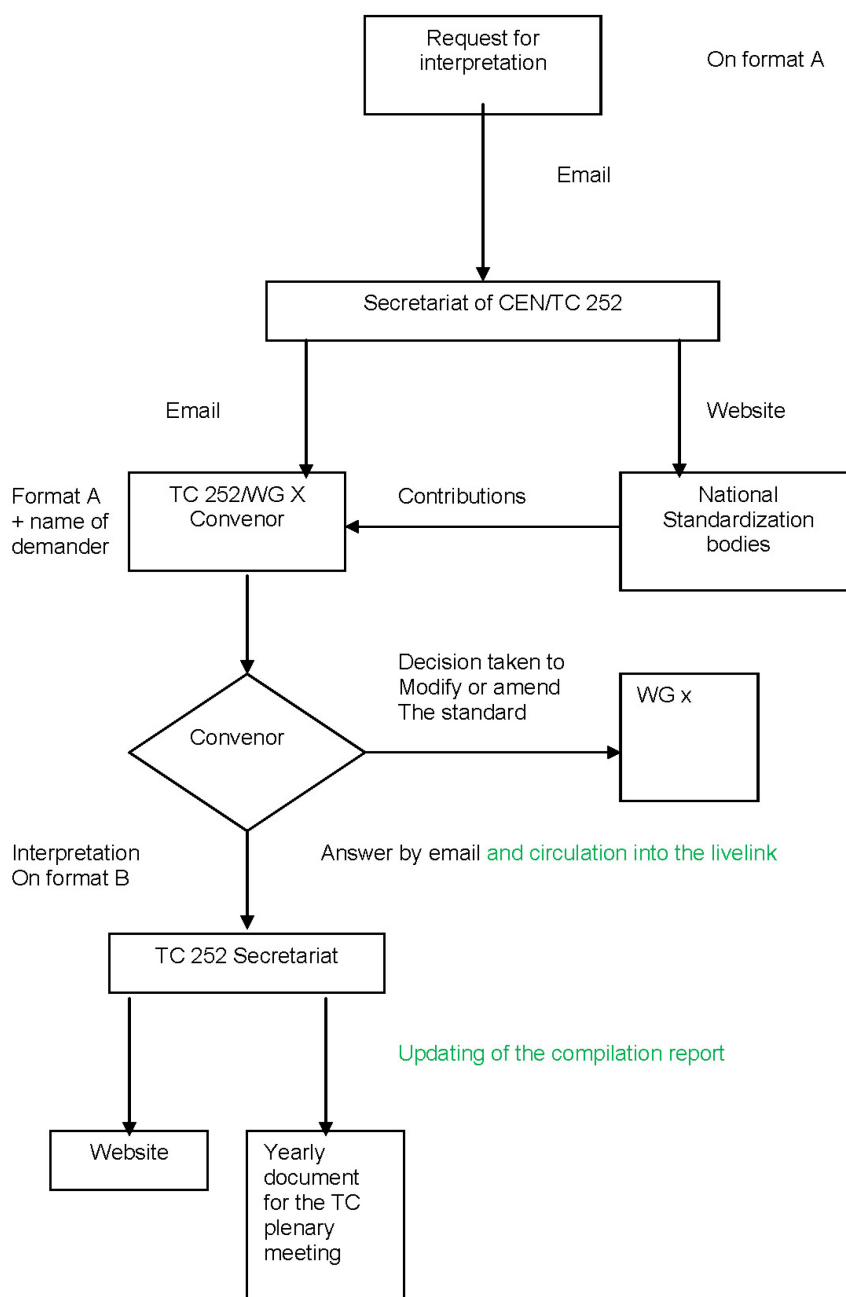
Proposals for amendments will be progressed as new work item proposals in accordance with CEN rules.

**c) Answers to requests for interpretations:**

Since requests for interpretations are submitted through a CEN member body, it is assumed that the member body will keep itself informed about decisions concerning the request and its progress and will itself inform the originator of the request as appropriate.



# FLOW CHART



31/05/2012

## 1 Scope

The purpose of this CEN Technical Report is to provide replies to requests for interpretations and clarifications of:

- EN 1273:2005, *Child use and care articles — Baby walking frames — Safety requirements and test methods*;
- EN 1888:2012, *Child care articles — Wheeled child conveyances — Safety requirements and test methods*;
- EN 1930:2011, *Child use and care articles — Safety barriers — Safety requirements and test methods*;
- EN 12586:2007, *Child use and care articles — Soother holder — Safety requirements and test methods*;
- EN 12790:2009, *Child use and care articles — Reclined cradles*;
- EN 12221-1:2008, *Changing units for domestic use — Part 1: Safety requirements*;
- EN 12221-2:2008, *Changing units for domestic use — Part 2: Test methods*;
- EN 1466:2004+A1:2007, *Child care articles — Carry cots and stands — Safety requirements and test methods*;
- EN 14350-2:2004, *Child use and care articles — Drinking equipment — Part 2: Chemical requirements and tests*;
- EN 1400:2013+A1:2014, *Child use and care articles — Soothers for babies and young children*;
- EN 14372:2004, *Child use and care articles — Cutlery and feeding utensils — Safety requirements and tests*;
- EN 16120:2012, *Child use and care articles — Chair mounted seat*;
- EN 14350-1:2004, *Child use and care articles — Drinking equipment - Part 1: General and mechanical requirements and tests*;
- EN 16232:2013, *Child use and care articles — Infant swings*.